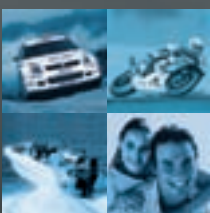


APV



Way of Life!

SUZUKI APV REALLY DELIVERS



Delivers On Comfort

Plush cabin carpet, air conditioning, power steering, a CD system with am/fm radio and remote central locking are just some of the features which will help even your longest working days fly by in comfort.

Delivers On Safety

You can be confident that every measure has been taken to make the APV a safe working vehicle. Suzuki's specially designed Total Effective Control Technology (TECT) body directs the force of any collision impact away from the occupants, while dual front airbags and side impact beams add even more levels of protection.

Delivers All Round

Looks are deceiving. The Suzuki APV may be moderately sized but thanks to some innovative design, it's big on storage space. Speedy delivery to the trickiest of loading bays is easy work with the APV's super-tight turning circle and hydraulic power steering. And its fuel-efficient petrol engine has all the low-end torque you need to haul heavy cargo.

Delivers On Space

The APV is a marvel of space efficiency. It features over 3 cubic metres of cargo space with superior weight distribution for ultra stable handling. The rear lifting gate-door guarantees easy accessibility, while an optional heavy duty carpeted cargo mat keeps your valuable freight safe from movement.

Delivers On Style

The Suzuki APV is sleek and innovative in design and comes in Superior White and the striking Silky Silver Metallic. Whether you would like to add a cargo barrier or rear protection bar, there are ways you can custom-style your APV to suit your own special needs.

Accessories



See overleaf for further details.

Specifications

APV SPECIFICATIONS

		APV
		5MT
DIMENSIONS		
Overall length	mm	4,155
Overall width	mm	1,655
Overall height	mm	1,860
Wheelbase	mm	2,625
Track	Front mm	1,435
	Rear mm	1,435
Minimum ground clearance		157
Load area length	mm	2,005
Load area width	mm	1,380
Load area height	mm	1,140
Minimum turning radius	m	4.9
WEIGHT		
Kerb weight (minimum)	Kg	1,140
Gross vehicle weight	Kg	1,950
CAPACITIES		
Seating capacity		2
Fuel tank capacity	L	46
Cargo Capacity	m ³	3.4
ENGINE		
Type		1.6 litres, 4 cylinders
Piston displacement	cm ³	1,590
Bore x stroke	mm	75.0 x 90.0
Compression ratio		9.5:1
Maximum output	KW/rpm	68 / 5,750
Maximum torque	Nm/rpm	127 / 4,500
Fuel distribution		EPI
TRANSMISSION		
Type		5MT
Gear ratio	1st	3.652
	2nd	1.947
	3rd	1.423
	4th	1.000
	5th	0.795
	Reverse	3.466
Final gear ratio		5.375
STEERING		
Type		Rack and Pinion
SUSPENSION		
Front		MacPherson strut and coil spring
Rear		Rigid axle and leaf spring
BRAKES		
Front		Ventilated discs
Rear		Leading and trailing drums
FUEL CONSUMPTION*		
CO ₂ emissions g/km		190
Comparative fuel consumption L/100km*		8.2

*ADR81/02 test results

Accessories

DESCRIPTION	PART NUMBER
EXTERIOR	
Floor mat, front	990AA-00817-001
Cargo barrier	990AA-00617-001
Rear Cargo mat	990AA-00817-003
Rear protection bar	990AA-00617-002
SATELLITE NAVIGATION UNITS	
Garmin NUVI1390	990AA-01216-139
Garmin NUVI1260	990AA-01216-126
Garmin NUVI1350	990AA-01216-135

APV EQUIPMENT

COMFORT		
Hydraulic power steering		•
Remote central locking		•
Air conditioning		•
Heater		•
CD player / Radio		•
Speakers	Instrument panel x 2	•
INSTRUMENT PANEL		
Digital Clock		•
Steering wheel	3-spoke (urethane)	•
INTERIOR		
Cabin light	Front (3-position)	•
Sun visors	Driver / Passenger	•
	Ticket holder (driver's side)	•
Seat material	Vinyl (grey)	•
Front seat	Sliding and reclining	•
	Head restraints	•
Floor carpet	Front	•
Accessory Socket		•
Ashtray	Front	•
EXTERIOR		
Halogen headlamps		•
Front window wipers	2 speed	•
Rear window demister		•
Mud flaps	Front	•
	Rear	•
Tyres and wheels	185R14C (14" steel)	•
SAFETY & SECURITY		
Seatbelts with pretensioners	Front 3-point ELR x 2	•
Side impact beams	Front	•
	Rear	•
High mounted stop lamp		•
SRS airbags	Driver	•
	Passenger	•

Colours



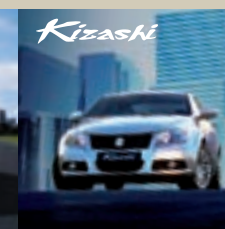
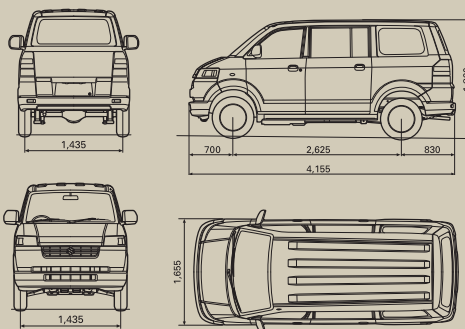
Superior White



Silky Silver Metallic*

*Additional premium/metallic paint charge.

Dimensions



All care is taken to ensure the accuracy of this brochure at the time of publication approval. Specifications, features, prices and model availability may vary from State to State and may change without notice. Always consult your authorised Suzuki Dealer or refer to www.suzuki.com.au for the latest details on all models. SUZUKI AUSTRALIA will not be held liable for any loss as a result of reliance on the content of this brochure, whether in negligence or otherwise. Vehicles are shown for illustrative purposes only and may not depict exact Australian specifications. Published May 2010. TSPSUZ761

www.suzuki.com.au



Way of Life!